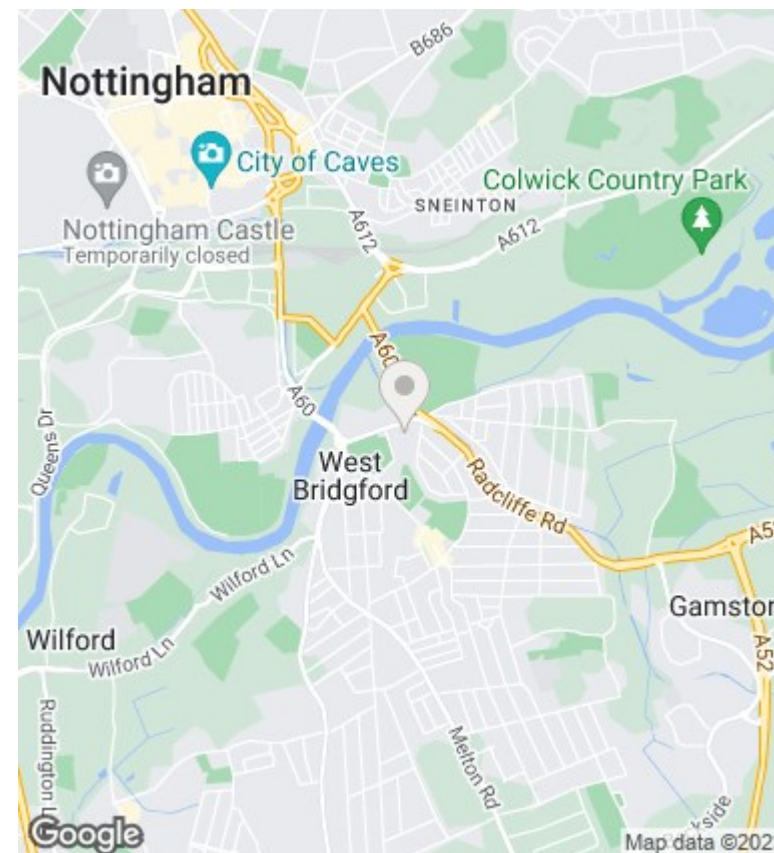
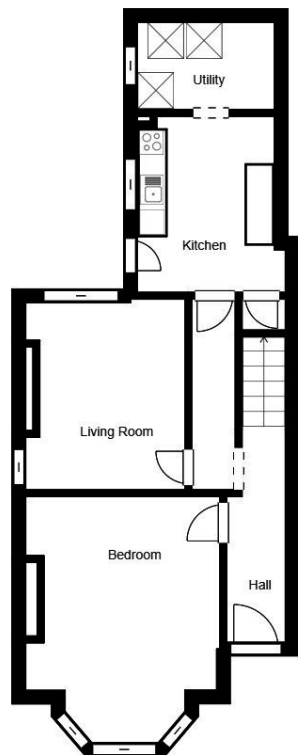




18 Radcliffe Road, West Bridgford, Nottingham, NG2 5FW

£690 Per Week

- Available Academic Year 2023/24
- Large Rear Garden
- Available from - 18/07/2023
- EPC Rating - D
- 6 Double Bedrooms
- Seperate Kitchen/Living area
- 50 Week Tenancy
- £15 pppw based on 6 sharing
- Rent Payable in Insatalmnts
- Council Tax Band - C



Directions

Viewings

Viewings by arrangement only. Call 0115 947 4330 to make an appointment.

Council Tax Band

B

EPC Rating:

D

Energy Efficiency Rating		Current	Potential
<i>Very energy efficient - lower running costs</i>			
(92 plus) A			
(81-91) B			84
(69-80) C			
(55-68) D		61	
(39-54) E			
(21-38) F			
(1-20) G			
<i>Not energy efficient - higher running costs</i>			
England & Wales		EU Directive 2002/91/EC	